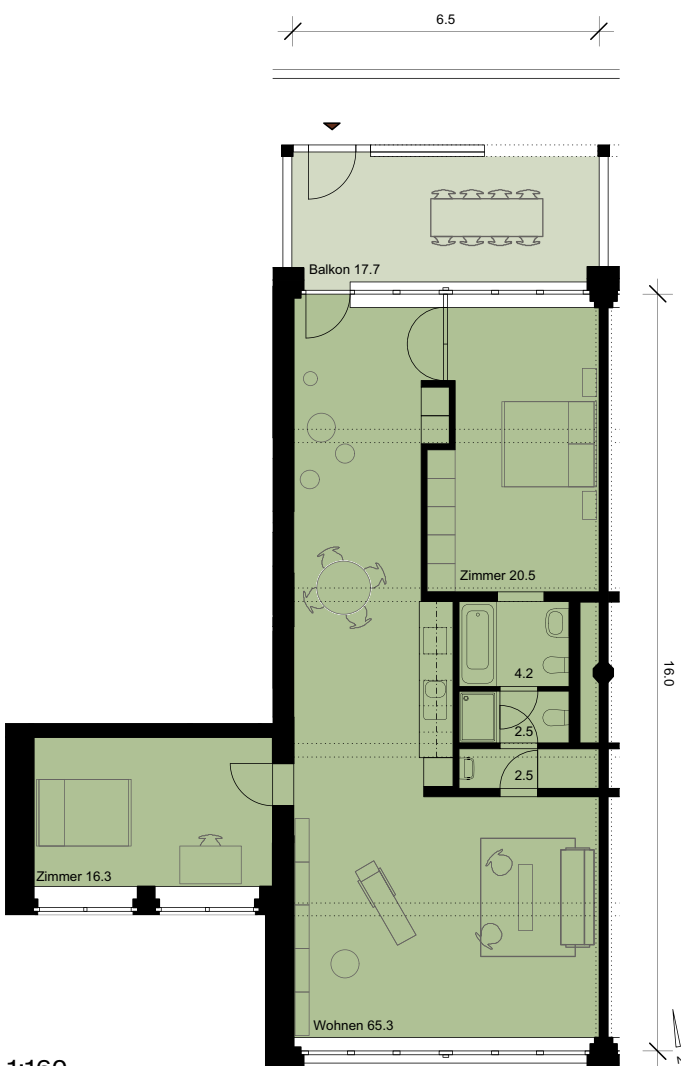
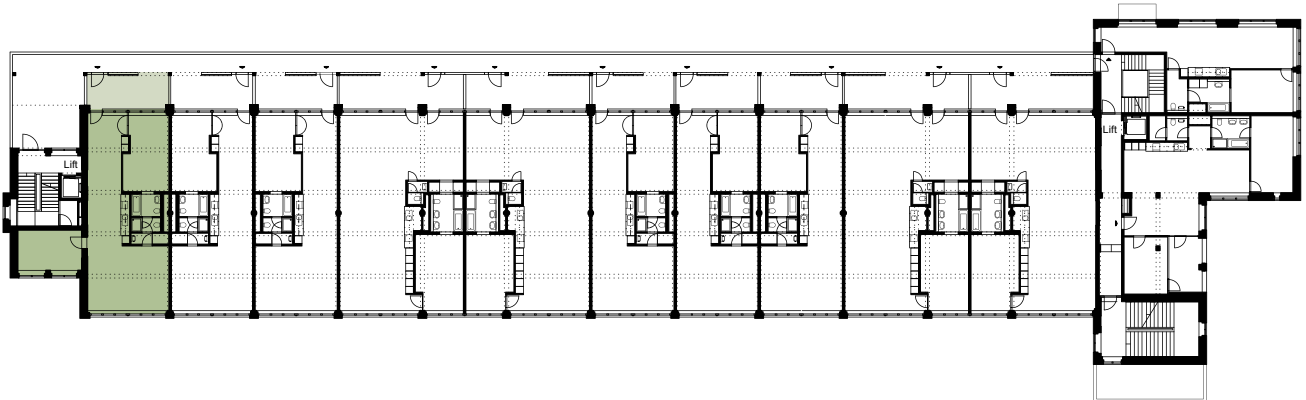


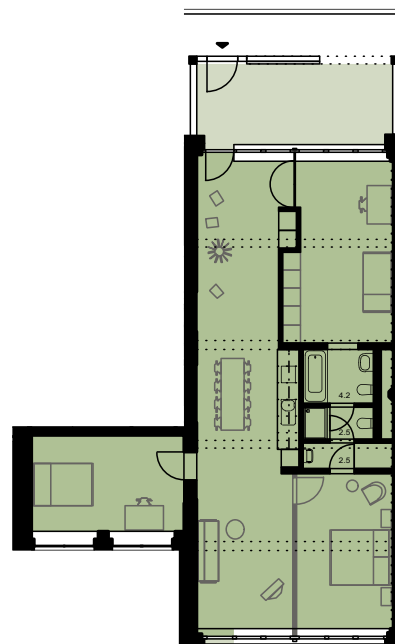
# GRUNDRISSVARIANTEN

Typ B, 1. und 3. Obergeschoss West,  
111 m<sup>2</sup>



1:160

Ausbauvariante:



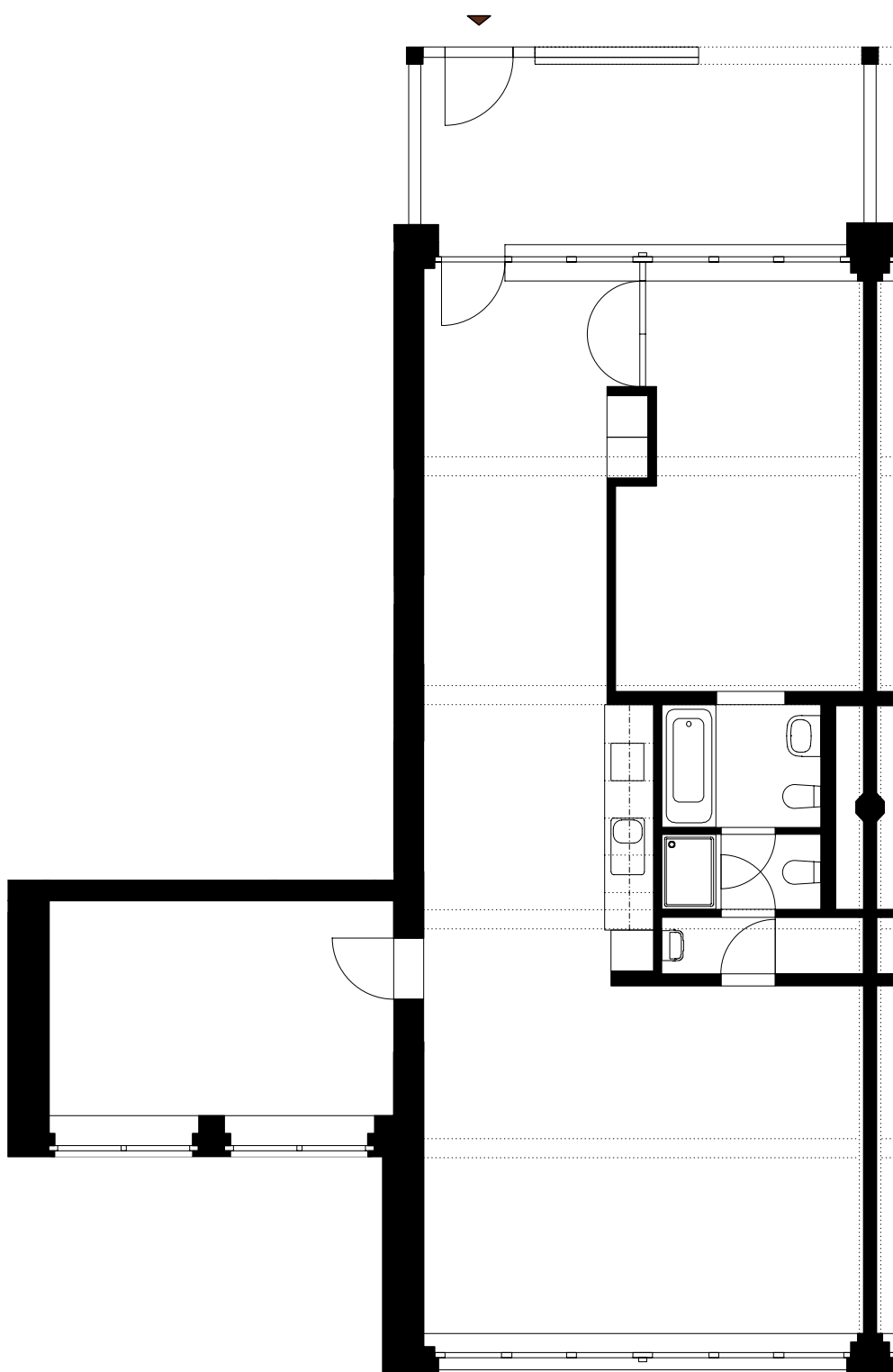
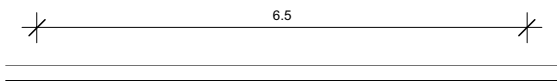
1:250

Von diesem Wohnungstyp gibt es insgesamt 2 Wohnungen.

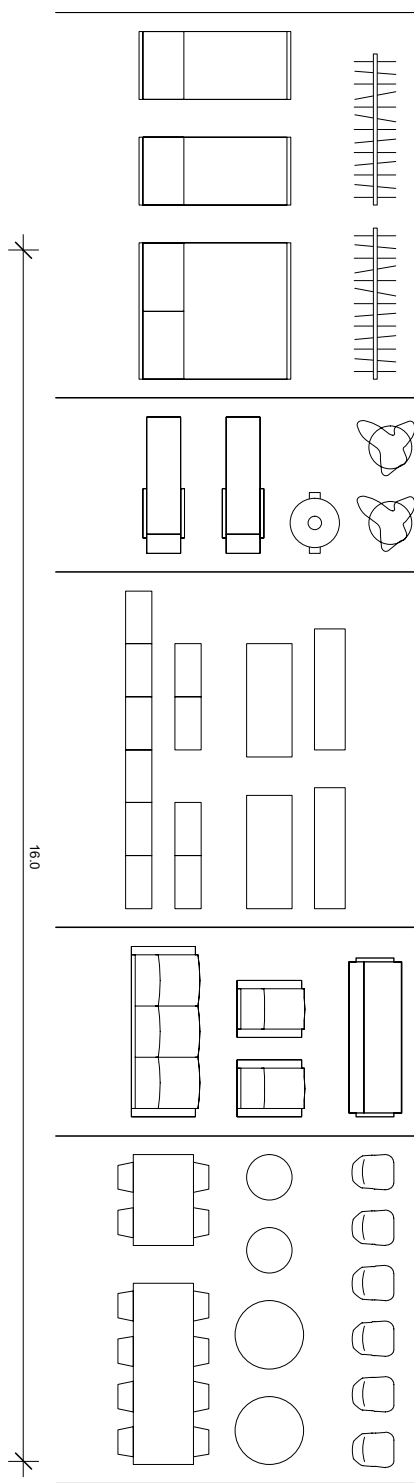
# RICHTEN SIE IHRE WOHNUNG EIN



## Grundriss Typ B, OG West



1:100



16.0